

Remodelled Assessments

designed to make knowledge and practical assessment clearer for learners and assessors

KNOWLEDGE QUESTIONS

These elicit understanding of the Performance Criteria and Knowledge Evidence for each unit.

Short scenarios are used to introduce some of the questions and we have included more instruction for learners about what they need to include in their answers. Benchmark answers are provided for assessors, with extra instruction where appropriate.



PROJECTS



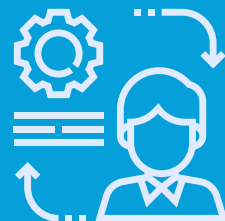
A project is included in all units. In most cases these will be theory based but some will be practical. Assessors can decide whether learners should complete the project as well as, or instead of, the knowledge questions.

A project checklist is included with all new projects.

PRACTICAL ASSESSMENTS

Performance Criteria and Performance Evidence are broken down into achievable and observable tasks and instructions are provided for assessors, so they know how to record each learners' performance.

Where appropriate detailed scenarios are used to put the required performance demonstrations into context.



LOG BOOKS



Some CHC units specify that demonstration of skills be observed over a particular period of time, under supervision, in an actual workplace. When this applies we provide a log book that can be printed and taken to the workplace. It can be completed by the workplace supervisor and the assessor, who will determine whether the performance was satisfactory.

REFLECTION DIARIES

Some units require learners to reflect on their work, skills or aptitude and to make suggestions regarding possible improvements. In such cases we provide a reflection diary that learners can complete outside of the workplace and submit to the assessor. Their reflections will contribute to the assessment result.

